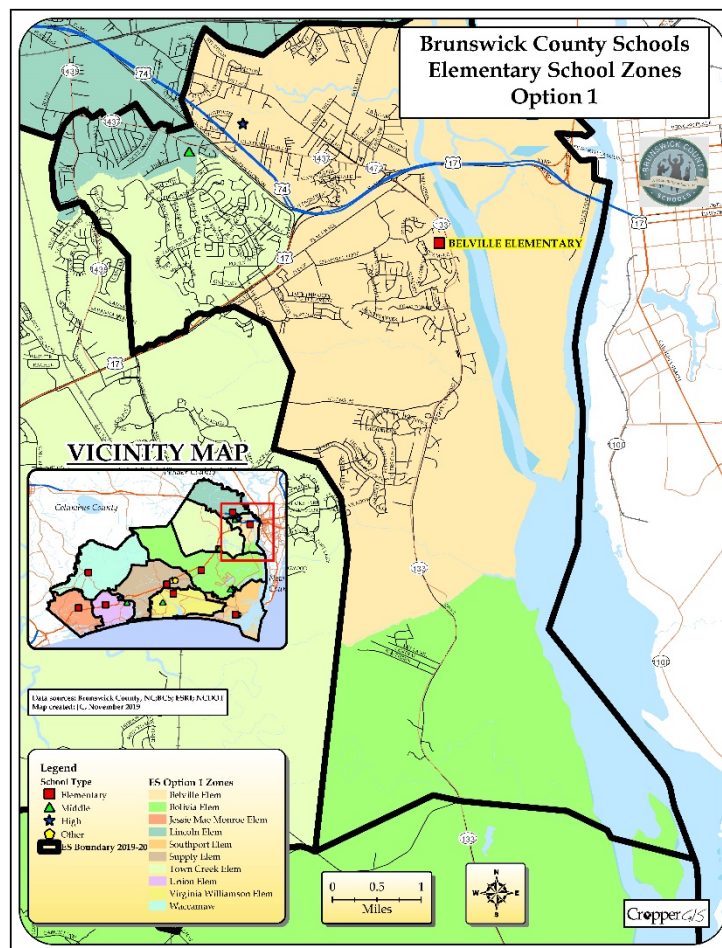




Brunswick County Schools, NC

December 16, 2019

Public Information Session Survey Comments





Elementary School DRAFT Option 1

Live-In Elementary Zone	What are your thoughts/observations as they relate to Elementary School DRAFT Option 1?
Belville ES	Do not like. My child will be sent to a new school
Belville ES	I am satisfied with this choice because my child will not be on a long commute to and from school
Belville ES	Better transportation as it relates to our 4th grader getting to and from school.
	I think this and option 2 make the most sense. They effect the least amount of students. I understand that bussing elementary and middle together is not ideal for some people, but I think it is very efficient and smart. Also, it makes sense for Waterford and Magnolia Greens to be grouped together and go to Town Creek because it is an easy drive with no u-turns and the availability of lights to turn out at all busy intersections. Despite it being the furthest school from my neighborhood (by only a small amount since we are almost in the middle of Belville, Lincoln, and Town Creek), I think it is the best option by a landslide.
Belville ES	I like it
Belville ES	Keep it the way it is!!
Belville ES	I am disappointed that we do not have an option at my address on creek bend drive. All 4 drafts have us relocating to Lincoln elementary and it's unfortunate we do not have a say in the matter.
Belville ES	Option 1 moves Magnolia Greens and Waterford to TC. These areas basically have no growth in school aged population. Belville will soon be overcrowded with the high growth areas being left in Belville. The transportation efficiency will be very low as the student population density in these two neighborhoods is very low.
Belville ES	Without seeing demographic numbers, hard to say. Based on impact and disruption from existing school lines, this option seems the best path forward to accomplish overcrowding concerns while impacting the least amount of families.
Belville ES	I don't feel this option adequately address the overcrowding at Belville long term. This plan would require an additional elementary school somewhere between Belville and Lincoln. I also have concern regarding the time it would take students from Waterford and Magnolia Greens on a bus (kids should never be on that bus for more than 45 minutes) and the safety of a bus travelling down NC 17 that long without seatbelts knowing the sheer number of accidents that occur along that highway. If this were to be the option selected I urge the consideration of a bus dedicated to Magnolia Greens and Waterford and the ability to cross the wooden bridges in the Waterford neighborhood to be able to provide realistic bus stop options to the students since most parents work in Wilmington and will be unable to drive all the way down to Town Creek-it is a huge inconvenience and with traffic going into Wilmington in the morning, making parents drive further will not be realistic. One major concern is the fact that these kids will be removed from their peer groups and the kids they would attend school with are not children that are normally in other activities with. The county really does have some dividing lines for such things and that is just due to the nature of how large geographically it is. To instill a greater sense of community the theory Live, Work and Play means that everything happens within a close proximity, in this plan that just simply won't happen. Magnolia Greens and Waterford do not agree with this plan and feel that our voices are not being heard since our student population is significantly less than those of Mallory Creek. We can object all we want but in comparison to their numbers it will look like we are less concerned which is truly not the case. Sadly, due to the difference in number of students in each neighborhood, Mallory Creek seems to be the only neighborhood the consultant and the board is willing to listen to.
Belville ES	The 4 minute mile rule makes this route MUCH faster as a direct drive down Route 17 than Mallory Creek back roads/neighborhoods/then maybe 17. I can't believe that this rule was mentioned as clearly highway miles are different than other road miles.
Belville ES	Option 1 moves the low growth areas into Town Creek. Belville will again be overcrowded soon. Where are the growth projections for each option? Does the Board have this data? If so, why hasn't it been shared with the public?
Belville ES	Option 1 moves the no-growth areas of Magnolia Greens and Waterford into TCE. TCE shows ZERO projected growth through 2023 as of the 12/2018 demographics study. Keeping Mallory Creek at Belville means it will again be overcrowded soon, as that area is projected to grow and Belville will be at 97% utilization.
Town Creek ES	I would find it more convenient to attend Lincoln Elementary while residing in Lanvale Trace. Proximity to schools aids in student involvement in general and extracurricular activities. Town Creek is not convenient or desired.
Belville ES	Oppose - based on McKibben numbers and report- this does not solve long term utilization problem.
Belville ES	Oppose - this map does not provide the most relief, nor is it the best solution for long term utilization



Live-In Elementary Zone	What are your thoughts/observations as they relate to Elementary School DRAFT Option 1?
Belville ES	Opposed- this does not help with all the homes being built in Mallory creek and providing the needed relief- the high growth areas still stay in belville district, not providing enough relief
Belville ES	Oppose- this does not help with long term relief when the majority of growth is still in Mallory creek and hundreds of homes are still being built
Belville ES	Oppose- this is not moving the number of students necessary to create enough room for future utilization
Belville ES	OPPOSE: It is not the best long term solution..
Belville ES	oppose, I am against this option
Belville ES	We transferred our son from Belville to Town Creek this past school year. We did this to get out ahead of the redistricting to come. We suspected our neighborhood would move to Town Creek. We like the option 1 scenario because it makes sense and allows our thriving student to continue on his current course.
Belville ES	Based on what i've heard watching the presentation and looking at the maps, seems to make the most sense. I greatly question the transportation estimate that for Waterford and Magnolia already on 17 that their commute to town creek would be longer than coming to Belville. I live in Liberty Landing and have taken my kids to town creek park and it's 30 minutes min whether I take 17 or cut through brunswick forest. I shop in waterford regularly and it's around 12 min to Harris Teeter in waterford. We live directly of 133 and 5 min from Belville Elementary. Without a transportation estimate I can't support option 3 or 4 for my daughter going to kindergarten in the fall. I don't know enough about the quality of education Belville vs Town Creek so it comes down to transportation for me. I do not want my 5 year old on a bus ride for over 40 min for no good reason, which is why i support option 1.
Belville ES	This would effect the least amount of students and provide room for growth within the town creek area.



Elementary School Modified DRAFT Option 2

Live-In Elementary Zone	What are your thoughts/observations as they relate to Elementary School DRAFT Modified Option 2?
Belville ES	Do not like. My child is being sent to a new school
Belville ES	I am satisfied with this choice because my child will not be on a long commute to and from school
Belville ES	Better transportation as it relates to our 4th grader getting back and forth from school.
	I think this and option 1 make the most sense. They effect the least amount of students. I understand that bussing elementary and middle together is not ideal for some people, but I think it is very efficient and smart. Also, it makes sense for Waterford and Magnolia Greens to be grouped together and go to Town Creek because it is an easy drive with no u-turns and the availability of lights to turn out at all busy intersections. Despite it being the furthest school from my neighborhood (by only a small amount since we are almost in the middle of Belville, Lincoln, and Town Creek), I think it is the best option by a landslide.
Belville ES	This seems to be the best one.
Belville ES	Same as # 1
Belville ES	Option 2 moves Magnolia Greens and Waterford to TC. These areas basically have no growth in school aged population. Belville will soon be overcrowded with the high growth areas being left in Belville. The transportation efficiency will be very low as the student population density in these two neighborhoods is very low.
Belville ES	I don't feel this option adequately address the overcrowding at Belville long term. This plan would require an additional elementary school somewhere between Belville and Lincoln. I also have concern regarding the time it would take students from Waterford and Magnolia Greens on a bus (kids should never be on that bus for more than 45 minutes) and the safety of a bus travelling down NC 17 that long without seatbelts knowing the sheer number of accidents that occur along that highway. If this were to be the option selected I urge the consideration of a bus dedicated to Magnolia Greens and Waterford and the ability to cross the wooden bridges in the Waterford neighborhood to be able to provide realistic bus stop options to the students since most parents work in Wilmington and will be unable to drive all the way down to Town Creek-it is a huge inconvenience and with traffic going into Wilmington in the morning, making parents drive further will not be realistic. One major concern is the fact that these kids will be removed from their peer groups and the kids they would attend school with are not children that are normally in other activities with. The county really does have some dividing lines for such things and that is just due to the nature of how large geographically it is. To instill a greater sense of community the theory Live, Work and Play means that everything happens within a close proximity, in this plan that just simply won't happen. Magnolia Greens and Waterford do not agree with this plan and feel that our voices are not being heard since our student population is significantly less than those of Mallory Creek. We can object all we want but in comparison to their numbers it will look like we are less concerned which is truly not the case. Sadly, due to the difference in number of students in each neighborhood, Mallory Creek seems to be the only neighborhood the consultant and the board is willing to listen to.
Belville ES	The 4 minute mile rule makes this route MUCH faster as a direct drive down Route 17 than Mallory Creek back roads/neighborhoods/then maybe 17. I can't believe that this rule was mentioned as clearly highway miles are different than other road miles.
Belville ES	Option 2 moves the low growth areas into Town Creek. Belville will again be overcrowded soon. Where are the growth projections for each option? Does the Board have this data? If so, why hasn't it been shared with the public?
Belville ES	Option 2 moves the no-growth areas of Magnolia Greens and Waterford into TCE. TCE shows ZERO projected growth through 2023 as of the 12/2018 demographics study. Keeping Mallory Creek at Belville means it will again be overcrowded soon, as that area is projected to grow and Belville will be at 97% utilization.
Town Creek ES	The same concern as above. Why is Lanvale Trace not slated to be attending Lincoln?
Belville ES	Oppose- based on McKibben report and numbers- this does not solve long term utilization problem
Belville ES	Oppose- this option does not provide the best long term solution for balancing utilization
Belville ES	Opposed- this is not moving the high growth areas out of belville and belville will continue to be overcrowded in 4 years according to McKibben numbers
Belville ES	Oppose- same reason above. Does not provide the greatest amount of relief overall and make room for enough future growth atbelville.
Belville ES	Oppose - same as response 1
Belville ES	I don't think it is the best long term solution for our children.



Live-In Elementary Zone	What are your thoughts/observations as they relate to Elementary School DRAFT Modified Option 2?
Belville ES	It is not the best long term solution..
Belville ES	I am against this option, oppose
Belville ES	We transferred our son from Belville to Town Creek this past school year. We did this to get out ahead of the redistricting to come. We suspected our neighborhood would move to Town Creek. We like the option 1 scenario because it makes sense and allows our thriving student to continue on his current course.
Belville ES	I don't know those areas well enough to know what the transportation aspect looks like to them.
Belville ES	This seems like a better option for buses.



Elementary School Modified DRAFT Option 3

Live-In Elementary Zone	What are your thoughts/observations as they relate to Elementary School DRAFT Modified Option 3?
Belville ES	Do not like. My child is being sent to a new school
Belville ES	This option. Has my elementary school child on the bus for way too long both ways 5 days a week. Not acceptable!
Belville ES	Not a good fit as it relates to transportation.
	While I would almost consider myself neutral to this option, I believe it effects entirely too many students/families and it makes very little sense to move Mallory Creek families so far to Town Creek when Belville is located so much closer
Belville ES	This is a ridiculous one.
Belville ES	Same as #1
Belville ES	Option 3 is the best option. It moves the highest growth areas out of Belville into Town Creek which has the room to absorb this growth. In addition, the transportation efficiency will be high because Mallory Creek has a very high student population density. A bus will be filled in just a handful of stops. In addition, it moves the entire Lanvale Rd corridor to the closer elementary and middle schools. For example, Wedgewood and Lanvale Forest are approximately 8-8.5 miles to TCMS but will be 2.5 miles to LMS. It realigns the neighborhoods to maximize busing efficiency as well as allow for longer-term growth in the northern end.
Belville ES	This is the most disruptive for the entire area. Transportation concerns for Mallory Creek students are not transparent. Two logical transportation routes are risky and cause safety concerns. Using back roads south of 133 is dangerous. Traveling through Brunswick Forest during rush hour and making a U-Turn onto Hwy 17 southbound is also risky. Current bus times for Mallory Creek students to Belville ES are about 20 mins. Lots of utilization. This high density neighborhood would be less likely to put their students on buses to Town Creek due to doubling the bus ride one way causing an unnecessary increase in car rider traffic through Brunswick Forest further complicating morning traffic concerns.
Belville ES	This plans make the most sense, you are keeping peer groups and communities united and bus travel time is reasonable. You are also achieving the goal of reduction in overcrowding at Belville. The board should be looking at this option as a solution. While it is the most disruptive it at least keeps neighborhoods together and provides a safer route to Town Creek via the access through Brunswick Forest which means less time on NC 17 for buses.
Belville ES	Watching the video give a generic 4 mins mile was actually shocking. Per GPS, it takes 10 mins LESS to DRIVE from Magnolia Greens/Waterford than Mallory Creek. That is a simple fact. It cannot be overlooked as they take about the same amount of time.
Belville ES	Option 3 is the best option. it moves the high growth areas into Town Creek, which has the capacity to absorb that growth. Cropper said Option 3 "has the BEST balance of ES utilization", "Overall, looking at both ES and MS, keeps communities closer to their schools", and is "Better than Options 1 and 2 in terms of distance to middle school...."
Belville ES	Option 3 moves the Mallory Creek to TCE which has the capacity to absorb that growth (note: the 12/2018 demographics study showed ZERO projected growth at TCE through 2023). In addition, it moves the Lanvale corridor (Lanvale Forest, Wedgewood, etc) to a closer elementary school. Cropper Stated "Best balance of ES Utilization, with space left in Belville, Bolivia, Lincoln, and Town Creek to account for future enrollment growth." Cropper also stated "Overall, looking at both ES and MS, keeps communities closer to their schools."
Town Creek ES	I prefer this one because the drive to Belville is easier but still feel like it should be slated for Lincoln in regards to Lanvale Trace.
Belville ES	Approve- this map makes the most sense- this moves the higher growth to Town creek, and there are still hundreds of houses being built in Mallory creek neighborhood. This has the best balance of long term utilization and efficiency.
Belville ES	Approve- this map seems to make the most sense - moving the areas of higher growth to town creek where it can be absorbed best. There are hundreds more houses being built in Mallory creek and these have not been factored into growth. Map 3 has the best balance of long term utilization and efficiency for our county. Any other map, we are just going to have to redistrict again in 4 more years.
Belville ES	Approved- this plan is the best long term solution for overcrowding
Belville ES	Approve- this option provides the greatest room for growth absorption in the future.
Belville ES	Approve- provides necessary relief in the right place, and does not disrupt demographic equity among schools. Best long term move for BCS
Belville ES	This is not the best long term solution for our children.



Live-In Elementary Zone	What are your thoughts/observations as they relate to Elementary School DRAFT Modified Option 3?
Belville ES	This will move the growth areas to Town Creek. Makes more sense in the long term because it will put the northern end in the best position to utilize all three elementary schools to their highest capacity; consequently, minimizing overcrowding.
Belville ES	option 3 makes the most sense. It is better for the long term and utilizes the schools in northern in the smartest way
Belville ES	Option 3 moves the high growth areas to Town Creek. This makes the most sense long-term because it will put the northern end in the best position to utilize all schools to their highest capacity.
Belville ES	We have heard good things regarding Belville Elementary, besides the over crowding issues. However we are not a fan of the feeder school Leland Middle. We prefer to have our son and eventually his sister both go to Town Creek Elementary and Middle so they can be on the same campus when the time comes.
Belville ES	This makes the most sense. Since these neighborhoods have the most growth in the county, they should be moved to this location. These neighborhoods will still have more growth in the upcoming years and if they stay at the same school, there will be another crowding issue in a couple of years.
Belville ES	I have a huge concern with my neighborhood being Liberty Landing going to Town Creek. Since we are not in the Mallory Creek subdivision and the neighborhood has few children, I am really concerned what the transportation time will be for my daughter going to kindergarten in Town Creek. I do believe if they have to make the trip to town creek elementary that they should then go to the middle. Mallory Creek and my neighborhood are farther away from Leland Middle and i'm not as concerned putting a 5th grader on a bus for a longer amount of town. But to put Liberty Landing that has 5 families with school age kids and Mallory Creek to Town Creek Elementary when we are less than 5 min from Belville Elementary so that Waterford and Magnolia Greens go to Belville, I would really need to see a planned transportation study to believe that is actually a feasible plan. If there was a planned transportation study that shows it to be the case, I'd be more open to the idea, but i really feel like the transportation aspect is not being really thought thru. I hoped that the options would be narrowed to 2 and do a transportation map to prove the plan before this decision is final.



Elementary School DRAFT Option 4

Live-In Elementary Zone	What are your thoughts/observations as they relate to Elementary School DRAFT Option 4?
Belville ES	Do not like. My child is being sent to another school
Belville ES	I am satisfied with this choice because my child will not be on a long commute to and from school
Belville ES	Our child gets to stay at Belville elementary school.
	I am completely against this option. Like option 3, it effects entirely too many students/families. (Option 1 and 2 effect so much less with similar relief to the schools). Also, there are still transportation issues that now would be effecting more students. Living in Magnolia Greens, I like the option of being able to exit the front or back of my neighborhood to get to school and having multiple options in case roads are backed up/being worked on and option 4 does not allow this. Everyone would be using the rear of our neighborhood from Grandiflora onto Lanvale. While Lincoln and Leland middle look close on a map to Magnolia Greens, there is no cut through in our neighborhood to get to them so it takes the same amount of time if not longer to get there versus the other school options due to traffic buildup/amount of busses stopping on Lanvale and the rest of the route.
Belville ES	Oppose
Belville ES	This is another ridiculous one
Belville ES	Same as # 1
Belville ES	It has the lowest transportation efficiency. It takes the Arbors and Birch Creek out of their neighborhood elementary (Belville).
Belville ES	This plan does not take into account future growth in Navassa (they expect a population and building boom in the next 2 years with multiple new developments planned). It also disrupts the core of the Leland community by separating the kids into 3 different schools that currently attend only 1. This plan literally strips away the idea of community and separates all of the kids without impacting the true problem, the overcrowding at Belville. This is not a viable option.
Belville ES	The 4 minute mile rule makes this route MUCH faster as a direct drive down Route 17 than Mallory Creek back roads/neighborhoods/then maybe 17. I can't believe that this rule was mentioned as clearly highway miles are different than other road miles.
Belville ES	Option 4 was created because of diversity issues. However, Cropper did not analyze free/reduced lunch data or racial diversity within the schools. How can a proposal be recommended on the basis of balancing diversity when we have no data to back that up?
Belville ES	Option 4 was created a response to diversity concerns. However, no demographics data was requested as a part of this study. So how do we know the true impacts?
Town Creek ES	Again, Lanvale Trace could easily be slated for Lincoln.
Belville ES	Oppose- this does not solve the utilization problem long term- as Navassa is expected to grow exponentially in the next 5 years with 2,000 plus homes
Belville ES	Oppose- this just does not make logical sense. We are moving kids to belville and then kids from belville are being moved to Lincoln. This is disruptive to move kids if they don't need to be moved.
Belville ES	Opposed- this does not leave room for the anticipated homes and growth expected in navassa.
Belville ES	Oppose. This map is disruptive pulling students from Belville and switching students from Lincoln to belville-it's literally swapping students.
Belville ES	Oppose- this is not a fluid map, looks like a half thought out decision and does not provide needed relief in the right areas due to the neighborhoods moving under this map. Does not provide room for future growth in Brunswick county because Lincoln will end up over crowded
Belville ES	This will move the high growth areas to Town Creek. Also makes more sense in the long term because it will put the northern end in the best position to utilize all 3 elementary schools to their highest capacity, consequently minimizing overcrowding.
Belville ES	It is not the best long term solution for our children.
Belville ES	against
Belville ES	We have not heard good things about Lincoln Elementary or Leland Middle. We know things are changing, but not fast enough. We bought our long term family home in a neighborhood that we felt would provide a good environment for our children to thrive...this included the designated schools. We are not at all comfortable with Option #4.



Live-In Elementary Zone	What are your thoughts/observations as they relate to Elementary School DRAFT Option 4?
Belville ES	I don't think it makes much sense to even have this option unless you've got the times for Magnolia and Waterford to Lincoln. I am not a current member of the school system so I have not heard whispers on where a potential expansion or new school would be located to make option 4 make sense. The biggest school age population is in Mallory Creek and that shift is what's going to affect the capacities for everyone.



Middle School DRAFT Option 1

Live-In Elementary Zone	What are your thoughts/observations as they relate to Middle School DRAFT Option 1?
Belville ES	N/A
Belville ES	I am satisfied with this choice because my child will not be on a long commute to and from school and will not have transportation strain for afterschool activities
	Once again, option 1 and 2 make the most sense to me. All the middle school options effect almost the same amount of students/families and provide similar relief outcomes. So in this case, I believe traffic/bussing will be the most efficient.
Belville ES	This is an ok option
Belville ES	Option 1 does not satisfy all of the stated objectives because it moves Magnolia Greens and Waterford out of their NEIGHBORHOOD SCHOOL to TCMS. Magnolia Greens and Waterford have no growth in school aged population. The middle school will never fill to capacity with this feeder pattern. The transportation efficiency will be very low as the student population density in these two neighborhoods is very low.
Belville ES	Magnolia Greens students can literally walk to the middle school, so why make the switch?? I have concern regarding the time it would take students from Waterford and Magnolia Greens on a bus (kids should never be on that bus for more than 45 minutes) and the safety of a bus travelling down NC 17 that long without seatbelts knowing the sheer number of accidents that occur along that highway. If this were to be the option selected I urge the consideration of a bus dedicated to Magnolia Greens and Waterford and the ability to cross the wooden bridges in the Waterford neighborhood to be able to provide realistic bus stop options to the students since most parents work in Wilmington and will be unable to drive all the way down to Town Creek-it is a huge inconvenience and with traffic going into Wilmington in the morning, making parents drive further will not be realistic. One major concern is the fact that these kids will be removed from their peer groups and the kids they would attend school with are not children that are normally in other activities with. The county really does have some dividing lines for such things and that is just due to the nature of how large geographically it is. To instill a greater sense of community the theory Live, Work and Play means that everything happens within a close proximity, in this plan that just simply won't happen. Magnolia Greens and Waterford do not agree with this plan and feel that our voices are not being heard since our student population is significantly less than those of Mallory Creek. We can object all we want but in comparison to their numbers it will look like we are less concerned which is truly not the case. Sadly, due to the difference in number of students in each neighborhood, Mallory Creek seems to be the only neighborhood the consultant and the board is willing to listen to.
Belville ES	The 4 minute mile rule makes this route MUCH faster as a direct drive down Route 17 than Mallory Creek back roads/neighborhoods/then maybe 17. I can't believe that this rule was mentioned as clearly highway miles are different than other road miles.
Belville ES	Option 1 moves the low growth areas into Town Creek. It keeps the entire 133 high growth corridor at LMS.
Other	Student lives in Bolivia Zone. Currently in 5th grade at Town Creek due to special needs requirement. Concerned about middle school Redistricting separates from all peers?
Belville ES	Option 1 moves Magnolia Greens and Waterford OUT OF THEIR NEIGHBORHOOD MIDDLE SCHOOL (LMS). Driving down Old Fayetteville, you can see Magnolia Greens homes directly behind LMS.
Town Creek ES	It would be easier on parents in Lanvale Trace if they are slated for Leland Middle.
Belville ES	Oppose- same reasons above. You are putting all the rich white kids at the same school... are we trying to segregate the schools here?
Belville ES	Oppose - same reasons above. This does not provide the best balance of long term utilization and map 1 and 2 are going to drastically disrupt school demographics
Belville ES	Opposed- this continues to keep the area of higher growth in the same spot, does not provide the best long term relief to overcrowding
Belville ES	Oppose- this moves all white kid rich neighborhoods together- has anyone bothered to look at how this impacts demographics?
Belville ES	Oppose- for same reasons listed in 1 above
Belville ES	This is not the best long term solution for our children.
Belville ES	It is not the best long term solution..
Belville ES	against option 1



Live-In Elementary Zone	What are your thoughts/observations as they relate to Middle School DRAFT Option 1?
Belville ES	This makes sense to us. We prefer to have our son and eventually his sister both go to Town Creek Elementary and Middle so they can be on the same campus when the time comes.
Belville ES	I do not have nearly as big of an issue based on where Leland middle is located and middle school age sof Liberty Landing going to Town Creek. I understand for simplicity that it makes sense. I think a transporation study should really be conducted. I agree neighborhoods should be kept together for the kids sake and transportation. My son and daughter are in daycare with kids from Mallory Creek, Hawkswater, Magnolia, etc. and I think a middle school study today vs what the population is 3 years from now will look a lot different. I think you're going to have to expand or build new either way to accomodate the influx of kids.



Middle School Modified DRAFT Option 2

Live-In Elementary Zone	What are your thoughts/observations as they relate to Middle School DRAFT Modified Option 2?
Belville ES	N/A
Belville ES	I am satisfied with this choice because my child will not be on a long commute to and from school and will not have transportation strain for afterschool activities
	Once again, option 1 and 2 make the most sense to me. All the middle school options effect almost the same amount of students/families and provide similar relief outcomes. So in this case, I believe traffic/bussing will be the most efficient.
Belville ES	This seems to be the best option
Belville ES	Option 2 does not satisfy all of the stated objectives because it moves Magnolia Greens and Waterford out of their NEIGHBORHOOD SCHOOL to TCMS. Magnolia Greens and Waterford have no growth in school aged population. The middle school will never fill to capacity with this feeder pattern. The transportation efficiency will be very low as the student population density in these two neighborhoods is very low.
Belville ES	Magnolia Greens students can literally walk to the middle school, so why make the switch?? I have concern regarding the time it would take students from Waterford and Magnolia Greens on a bus (kids should never be on that bus for more than 45 minutes) and the safety of a bus travelling down NC 17 that long without seatbelts knowing the sheer number of accidents that occur along that highway. If this were to be the option selected I urge the consideration of a bus dedicated to Magnolia Greens and Waterford and the ability to cross the wooden bridges in the Waterford neighborhood to be able to provide realistic bus stop options to the students since most parents work in Wilmington and will be unable to drive all the way down to Town Creek-it is a huge inconvenience and with traffic going into Wilmington in the morning, making parents drive further will not be realistic. One major concern is the fact that these kids will be removed from their peer groups and the kids they would attend school with are not children that are normally in other activities with. The county really does have some dividing lines for such things and that is just due to the nature of how large geographically it is. To instill a greater sense of community the theory Live, Work and Play means that everything happens within a close proximity, in this plan that just simply won't happen. Magnolia Greens and Waterford do not agree with this plan and feel that our voices are not being heard since our student population is significantly less than those of Mallory Creek. We can object all we want but in comparison to their numbers it will look like we are less concerned which is truly not the case. Sadly, due to the difference in number of students in each neighborhood, Mallory Creek seems to be the only neighborhood the consultant and the board is willing to listen to.
Belville ES	The 4 minute mile rule makes this route MUCH faster as a direct drive down Route 17 than Mallory Creek back roads/neighborhoods/then maybe 17. I can't believe that this rule was mentioned as clearly highway miles are different than other road miles.
Belville ES	Option 2 keeps the entire 133 high growth corridor at LMS.
Belville ES	Option 2 moves Magnolia Greens and Waterford OUT OF THEIR NEIGHBORHOOD MIDDLE SCHOOL (LMS). Driving down Old Fayetteville, you can see Magnolia Greens homes directly behind LMS.
Town Creek ES	See same response to recent question.
Belville ES	Oppose- again- all rich white kids are at the same school. This does not solve the problem of utilization long term based on McKibbens demographic report and future forecasted numbers.
Belville ES	Oppose- same reasons above.
Belville ES	Opposed- this does not provide the best relief overall, and segregates the high dollar neighborhoods at one school
Belville ES	Oppose- same reasons above
Belville ES	Oppose- for same reasons listed above in 2
Belville ES	This is not the best long term solution for our children.
Belville ES	It is not the best long term solution..
Belville ES	against this option
Belville ES	This makes sense to us. We prefer to have our son and eventually his sister both go to Town Creek Elementary and Middle so they can be on the same campus when the time comes.



Middle School Modified DRAFT Option 3

Live-In Elementary Zone	What are your thoughts/observations as they relate to Middle School DRAFT Modified Option 3?
Belville ES	N/A
Belville ES	I dissatisfied with this choice because my child will be on a long commute to and from school and will have transportation strain for afterschool activities
Belville ES	Transportation route is too far from starting point and would be strenuous on parents to attend all necessary functions for school activities.
	Similar to my elementary school response, I do not think it is logical to take Mallory Creek away from a school that is so much closer to send them to Town Creek middle when there are other neighborhoods that are a more equal distance to all the schools.
Belville ES	This is ridiculous.
Belville ES	Option 3 is the only option that satisfies all of the stated objectives. It keeps Magnolia Greens and Waterford at THEIR NEIGHBORHOOD school. It keeps the entire Lanvale Rd corridor at LMS. It will by far have the highest bussing efficiency by keeping the Lanvale Rd corridor at LMS.
Belville ES	This makes sense, you are keeping the surrounding communities at their local school, not forcing them to drive down NC17. You are also keeping students with their peers and their community.
Belville ES	Watching the video give a generic 4 mins mile was actually shocking. Per GPS, it takes 10 mins LESS to DRIVE from Magnolia Greens/Waterford than Mallory Creek. That is a simple fact. It cannot be overlooked as they take about the same amount of time.
Belville ES	Option 3 moves the high growth area of Mallory Creek to TCMS. Cropper stated "Overall, looking at both ES and MS, keeps communities closer to their schools", and is "Better than Options 1 and 2 in terms of distance to middle school..."
Belville ES	This is the best option. It keeps the entire Lanvale Corridor at LMS, which is THE NEIGHBORHOOD MIDDLE SCHOOL for those communities (Magnolia Greens, Lanvale Trace, Lanvale Forest, Wedgewood, etc). Cropper GIS stated, regarding option 3, "Overall, looking at both ES and MS, keeps communities closer to their schools." Cropper also stated "Better than options 1 and 2 in terms distance to middle school for students moved to Town Creek MS"
Town Creek ES	This makes sense for where I reside. Lanvale Trace should attend Leland Middle.
Belville ES	Approve- this makes the most sense- moves the area of higher growth to town creek and allows the other schools to absorb growth better
Belville ES	Approve- this map provides the best balance of long term utilization and efficiency, and does not disrupt the balance of demographics across schools. This is the best long term solution
Belville ES	Approve- this provides the best long term solution for efficiency and future growth, does not disrupt school demographics the way maps 1 and 2 do. This makes the best long term decision for our county.
Belville ES	Approve- this creates room for future growth, also moves the areas of higher growth (Mallory creek to Town creek where more homes are still being built and up and coming) to town creek area which is able to absorb this higher amount of growth
Belville ES	Approve- this just makes the most sense for the future growth in Brunswick county
Belville ES	This is not the best long term solution for our children.
Belville ES	This will move the growth areas to Town Creek. Makes more sense in the long term because it will put the northern end in the best position to utilize all three elementary schools/Middle to their highest capacity; consequently, minimizing overcrowding.
Belville ES	option 3 makes the most sense. it's better for the long term
Belville ES	Option 3 moves the high growth areas to Town Creek. This makes the most sense long-term because it will put the northern end in the best position to utilize all schools to their highest capacity.
Belville ES	We have heard good things regarding Belville Elementary, besides the over crowding issues. However we are not a fan of the feeder school Leland Middle. We prefer to have our son and eventually his sister both go to Town Creek Elementary and Middle so they can be on the same campus when the time comes.



Middle School DRAFT Option 4

Live-In Elementary Zone	What are your thoughts/observations as they relate to Middle School DRAFT Option 4?
Belville ES	N/A
Belville ES	I am satisfied with this choice because my child will not be on a long commute to and from school and will not have transportation strain for afterschool activities
	I worry about the traffic of too many neighborhoods off Lanvale going to Leland middle school because traffic can get very backed up. It is an easier drive to Town Creek middle with a lesser chance of bus traffic since there are minimal stops on the major roads. I like the idea of the neighborhoods/homes off Lanvale rd being split between Town Creek and Leland middle but I think the line should be drawn further down past Lanvale Forest. (Grandiflora drive should be town Creek, Lanvale forest and Lanvale Trace should be town Creek.)
Belville ES	This one is even more ridiculous
Belville ES	Unnecessarily moves the Arbors and Birch Creek out of the LMS attendance zone and sends them to a much further middle school.
Belville ES	The 4 minute mile rule makes this route MUCH faster as a direct drive down Route 17 than Mallory Creek back roads/neighborhoods/then maybe 17. I can't believe that this rule was mentioned as clearly highway miles are different than other road miles.
Belville ES	Option 4 was created because of diversity issues. However, Cropper did not analyze free/reduced lunch data or racial diversity within the schools. How can a proposal be recommended on the basis of balancing diversity when we have no data to back that up? And this just causes more students to be bused further distances at the middle school level.
Belville ES	Oppose based on the comments made on the elementary option 4.
Town Creek ES	I do not like this one. Again, I do not think Lanvale Trace should attend Town Creek Middle.
Belville ES	Oppose- this does not help utilization when Navassa is expected to grow exponentially in the next 5 years with 2000 plus homes.
Belville ES	Oppose- this map does not seem to make the best sense- seems like an afterthought
Belville ES	Opposed-
Belville ES	Oppose- this is not smart- no room for future growth when these smaller towns like navassa are anticipating growth and would feed into this school
Belville ES	Oppose- same reasons listed above
Belville ES	This will move the high growth areas to Town Creek. Also makes more sense in the long term because it will put the northern end in the best position to utilize all 3 elementary/Middle schools to their highest capacity, consequently minimizing overcrowding.
Belville ES	It is not the best long term solution..
Belville ES	against this option
Belville ES	We have not heard good things about Lincoln Elementary or Leland Middle. We know things are changing, but not fast enough. We bought our long term family home in a neighborhood that we felt would provide a good environment for our children to thrive...this included the designated schools. We are not at all comfortable with Option #4.
Belville ES	based on what i've heard from from transportation i don't think it makes sense.