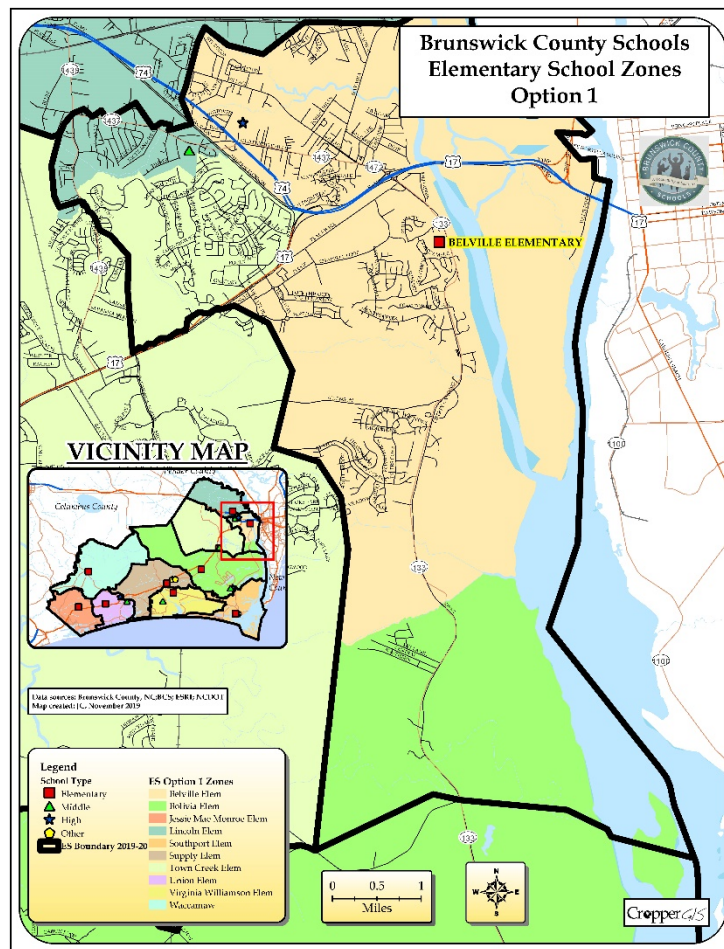




Brunswick County Schools, NC

Public Information Session Survey Results





Online Survey Results

Introduction

The Brunswick County Schools hosted a public information session on November 18, 2019. Cropper GIS facilitated the meeting and shared information about the committee goals, guidelines, and process and introduced three options that help to meet the redistricting study goals. The public then participated in a gallery walk where each option was displayed on large maps along with data tables. Staff and consultants answered questions and heard input from the public as they viewed and discussed the three options under consideration. The public was then encouraged to participate in an online survey related to the three options presented. Approximately 50 members of the public attended the meeting.

Online Survey

One-hundred sixty-one (161) respondents participated in the online survey that was available to the public from November 18, 2019 until December 11, 2019. The survey asked respondents to provide their thoughts, observations, and overall attitude toward the three options that were presented at the November 18, 2019 information session and posted on the BCS web site. The data - aggregated, summarized and reported below - is intended to be used by school administrators as a tool to help facilitate their deliberation and decision-making regarding the redistricting process. The results of the survey alone do not constitute a decision regarding a boundary change and are not intended to be used in the decision-making process independent of other information, discussion, and deliberation.

In order to gain a better understanding of where the majority of the respondents are coming from throughout the district, the respondents were asked *"What Elementary School Zone do you live in for the current year?"*

Total Respondents by Live-In Elementary School Zone		
Live-In Elementary School Zone	Total Respondents	Percent of Respondents
Belville ES	97	60.2%
Lincoln ES	4	2.5%
Town Creek ES	31	19.3%
Other	16	9.9%
No Response	13	8.1%
Total	161	100.0%

Option Attitude Summary Tables for All Submitted Comments

The following provides a general summary on the community's overall attitudes related to the options. Important points to consider as you read this set of tables:

1. The majority of responses that are submitted are typically in regard to the most suitable option for their particular neighborhood / subdivision.
2. The administration needs to maintain focus on building a solution that best meets the redistricting study objectives and considerations.



Options Attitude Summaries

The tables below summarize overall attitudes toward each of the options:

Elementary School Options Attitude Summary						
Option Attitude	ES Option 1		ES Option 2		ES Option 3	
	n	%	n	%	n	%
Approve	63	39.1%	64	39.8%	23	14.3%
Like	9	5.6%	16	9.9%	3	1.9%
Neutral	23	14.3%	18	11.2%	18	11.2%
Dislike	11	6.8%	9	5.6%	12	7.5%
Oppose	42	26.1%	40	24.8%	94	58.4%
No Response	13	8.1%	14	8.7%	11	6.8%
Total	161	100.0%	161	100.0%	161	100.0%

Middle School Options Attitude Summary						
Option Attitude	MS Option 1		MS Option 2		MS Option 3	
	n	%	n	%	n	%
Approve	46	28.6%	55	34.2%	27	16.8%
Like	8	5.0%	7	4.3%	7	4.3%
Neutral	30	18.6%	32	19.9%	33	20.5%
Dislike	15	9.3%	9	5.6%	9	5.6%
Oppose	36	22.4%	31	19.3%	64	39.8%
No Response	26	16.1%	27	16.8%	21	13.0%
Total	161	100.0%	161	100.0%	161	100.0%



Primary Concerns Summaries

The tables below summarize primary concerns about each of the options:

Elementary School Options Primary Concern						
Primary Concern	ES Option 1		ES Option 2		ES Option 3	
	n	%	n	%	n	%
Enrollment Concern	14	8.7%	15	9.3%	17	10.6%
Feeder Pattern Concern	3	1.9%	4	2.5%	14	8.7%
Neighborhood Concern	10	6.2%	8	5.0%	18	11.2%
Transportation Concern	28	17.4%	24	14.9%	62	38.5%
N/A	62	38.5%	59	36.6%	18	11.2%
No Response	44	27.3%	51	31.7%	32	19.9%
Total	161	100.0%	161	100.0%	161	100.0%

Middle School Options Primary Concern						
Primary Concern	MS Option 1		MS Option 2		MS Option 3	
	n	%	n	%	n	%
Enrollment Concern	5	3.1%	5	3.1%	13	8.1%
Feeder Pattern Concern	5	3.1%	6	3.7%	9	5.6%
Neighborhood Concern	14	8.7%	10	6.2%	11	6.8%
Transportation Concern	27	16.8%	25	15.5%	45	28.0%
N/A	56	34.8%	54	33.5%	34	21.1%
No Response	54	33.5%	61	37.9%	49	30.4%
Total	161	100.0%	161	100.0%	161	100.0%



Options Attitude Summary by Respondents Live-In Elementary School Zone

The tables below show the options attitude summaries broken down by the live-in zones of the survey respondents.:

ES Option 1 Attitude Summary by Respondent Live-In Elementary School Zone									
Live-In ES Zone	Approve	Like	Neutral	Dislike	Oppose	No Response	Total	Percent Approve	Percent Oppose
Belville ES	40	7	10	9	31	0	97	41.2%	32.0%
Lincoln ES	0	0	3	0	1	0	4	0.0%	25.0%
Town Creek ES	20	2	5	1	2	1	31	64.5%	6.5%
Other	0	0	5	1	8	2	16	0.0%	50.0%
No Response	3	0	0	0	0	10	13	23.1%	0.0%
Total	63	9	23	11	42	13	161	39.1%	26.1%

ES Option 2 Attitude Summary by Respondent Live-In Elementary School Zone									
Live-In ES Zone	Approve	Like	Neutral	Dislike	Oppose	No Response	Total	Percent Approve	Percent Oppose
Belville ES	43	10	8	7	28	1	97	44.3%	28.9%
Lincoln ES	2	0	1	0	1	0	4	50.0%	25.0%
Town Creek ES	17	4	5	2	2	1	31	54.8%	6.5%
Other	0	1	4	0	9	2	16	0.0%	56.3%
No Response	2	1	0	0	0	10	13	15.4%	0.0%
Total	64	16	18	9	40	14	161	39.8%	24.8%

ES Option 3 Attitude Summary by Respondent Live-In Elementary School Zone									
Live-In ES Zone	Approve	Like	Neutral	Dislike	Oppose	No Response	Total	Percent Approve	Percent Oppose
Belville ES	19	2	7	10	59	0	97	19.6%	60.8%
Lincoln ES	0	0	1	0	3	0	4	0.0%	75.0%
Town Creek ES	2	1	4	2	21	1	31	6.5%	67.7%
Other	1	0	6	0	7	2	16	6.3%	43.8%
No Response	1	0	0	0	4	8	13	7.7%	30.8%
Total	23	3	18	12	94	11	161	14.3%	58.4%

MS Option 1 Attitude Summary by Respondent Live-In Elementary School Zone									
Live-In ES Zone	Approve	Like	Neutral	Dislike	Oppose	No Response	Total	Percent Approve	Percent Oppose
Belville ES	27	2	18	10	28	12	97	27.8%	28.9%
Lincoln ES	0	2	1	0	1	0	4	0.0%	25.0%
Town Creek ES	17	3	4	2	2	3	31	54.8%	6.5%
Other	0	1	5	2	4	4	16	0.0%	25.0%
No Response	2	0	2	1	1	7	13	15.4%	7.7%
Total	46	8	30	15	36	26	161	28.6%	22.4%



MS Option 2 Attitude Summary by Respondent Live-In Elementary School Zone									
Live-In ES Zone	Approve	Like	Neutral	Dislike	Oppose	No Response	Total	Percent Approve	Percent Oppose
Belville ES	33	3	17	6	24	14	97	34.0%	24.7%
Lincoln ES	2	0	1	0	1	0	4	50.0%	25.0%
Town Creek ES	17	2	7	2	0	3	31	54.8%	0.0%
Other	0	2	5	1	4	4	16	0.0%	25.0%
No Response	3	0	2	0	2	6	13	23.1%	15.4%
Total	55	7	32	9	31	27	161	34.2%	19.3%

MS Option 3 Attitude Summary by Respondent Live-In Elementary School Zone									
Live-In ES Zone	Approve	Like	Neutral	Dislike	Oppose	No Response	Total	Percent Approve	Percent Oppose
Belville ES	20	3	20	5	38	11	97	20.6%	39.2%
Lincoln ES	0	0	1	0	3	0	4	0.0%	75.0%
Town Creek ES	2	1	5	2	18	3	31	6.5%	58.1%
Other	1	2	4	1	4	4	16	6.3%	25.0%
No Response	4	1	3	1	1	3	13	30.8%	7.7%
Total	27	7	33	9	64	21	161	16.8%	39.8%

Conclusion

To summarize, the data presented in this summary report will be utilized as a tool to help school administrators assess the options. However, the results of the public information session should not be the only deciding factor when reviewing the options due to the uneven distribution of respondents across the district.