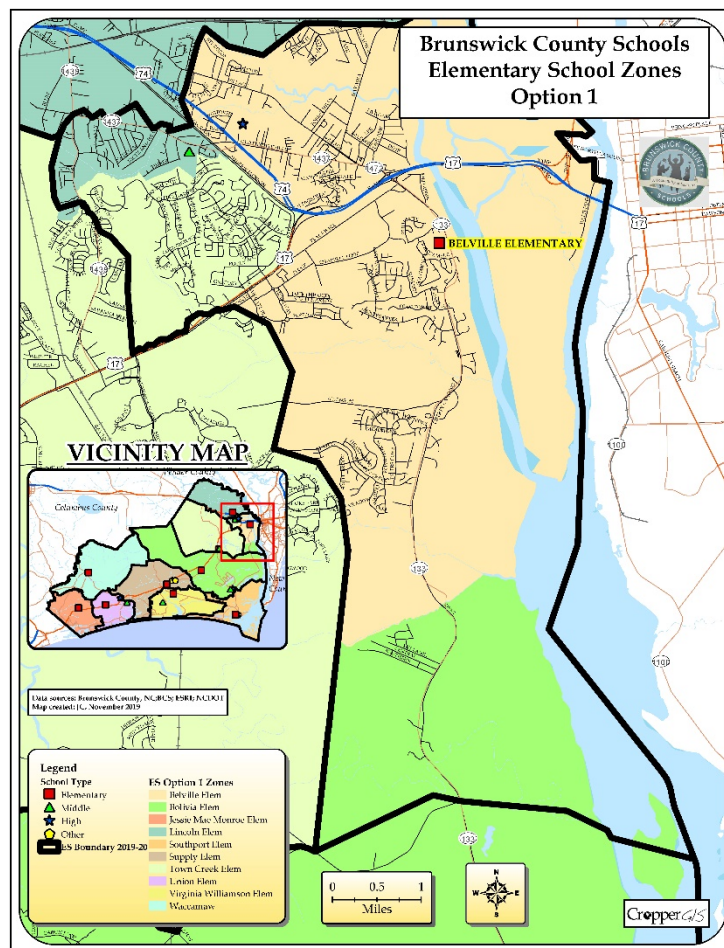




# Brunswick County Schools, NC

December 16, 2019

## Public Information Session Survey Results





## Online Survey Results

### Introduction

The Brunswick County Schools hosted a public information session on December 16, 2019. Cropper GIS facilitated the meeting and shared information about the committee goals, guidelines, and process and introduced four options that help to meet the redistricting study goals. The public then participated in a gallery walk where each option was displayed on large maps along with data tables. Staff and consultants answered questions and heard input from the public as they viewed and discussed the four options under consideration. The public was then encouraged to participate in an online survey related to the four options presented. Approximately 25 members of the public attended the meeting.

### Online Survey

One-thousand-nine-hundred-ninety-five (1,995) respondents participated in the online survey that was available to the public from December 16, 2019 until January 5, 2019. The survey asked respondents to provide their thoughts, observations, and overall attitude toward the four options that were presented at the December 16, 2019, information session and posted on the BCS web site. The data - aggregated, summarized and reported below - is intended to be used by school administrators as a tool to help facilitate their deliberation and decision-making regarding the redistricting process. The results of the survey alone do not constitute a decision regarding a boundary change and are not intended to be used in the decision-making process independent of other information, discussion, and deliberation.

In order to gain a better understanding of where the majority of the respondents are coming from throughout the district, the respondents were asked *"What Elementary School Zone do you live in for the current year?"*

<b>Total Respondents by Live-In Elementary School Zone</b>		
<b>Live-In Elementary School Zone</b>	<b>Total Respondents</b>	<b>Percent of Respondents</b>
Belville ES	1,988	99.6%
Lincoln ES	0	0.0%
Town Creek ES	3	0.2%
Other	1	0.1%
No Response	3	0.2%
<b>Total</b>	<b>1,995</b>	<b>100.0%</b>

### Option Attitude Summary Tables for All Submitted Comments

The following provides a general summary on the community's overall attitudes related to the options. Important points to consider as you read this set of tables:

1. The majority of responses that are submitted are typically in regard to the most suitable option for the respondent's particular neighborhood / subdivision.
2. The administration needs to maintain focus on building a solution that best meets the redistricting study objectives and considerations.



**Options Attitude Summaries**

The tables below summarize overall attitudes toward each of the options:

Elementary School Options Attitude Summary								
Option Attitude	ES Option 1		ES Modified Option 2		ES Modified Option 3		ES Option 4	
	n	%	n	%	n	%	n	%
Approve	1,962	98.3%	1,962	98.3%	27	1.4%	1,942	97.3%
Like	3	0.2%	2	0.1%	2	0.1%	3	0.2%
Neutral	2	0.1%	4	0.2%	4	0.2%	2	0.1%
Dislike	6	0.3%	6	0.3%	8	0.4%	6	0.3%
Oppose	17	0.9%	17	0.9%	1,950	97.7%	39	2.0%
No Response	5	0.3%	4	0.2%	4	0.2%	3	0.2%
<b>Total</b>	<b>1,995</b>	<b>100.0%</b>	<b>1,995</b>	<b>100.0%</b>	<b>1,995</b>	<b>100.0%</b>	<b>1,995</b>	<b>100.0%</b>

Middle School Options Attitude Summary								
Option Attitude	MS Option 1		MS Modified Option 2		MS Modified Option 3		MS Option 4	
	n	%	n	%	n	%	n	%
Approve	1,939	97.2%	1,946	97.5%	29	1.5%	1,939	97.2%
Like	2	0.1%	1	0.1%	2	0.1%	2	0.1%
Neutral	4	0.2%	5	0.3%	5	0.3%	4	0.2%
Dislike	5	0.3%	5	0.3%	7	0.4%	6	0.3%
Oppose	20	1.0%	19	1.0%	1,933	96.9%	26	1.3%
No Response	25	1.3%	19	1.0%	19	1.0%	18	0.9%
<b>Total</b>	<b>1,995</b>	<b>100.0%</b>	<b>1,995</b>	<b>100.0%</b>	<b>1,995</b>	<b>100.0%</b>	<b>1,995</b>	<b>100.0%</b>



**Primary Concerns Summaries**

The tables below summarize primary concerns about each of the options:

Elementary School Options Primary Concern								
Primary Concern	ES Option 1		ES Modified Option 2		ES Modified Option 3		ES Option 4	
	n	%	n	%	n	%	n	%
Enrollment Concern	10	0.5%	10	0.5%	2	0.1%	7	0.4%
Feeder Pattern Concern	1	0.1%	1	0.1%	4	0.2%	2	0.1%
Neighborhood Concern	7	0.4%	6	0.3%	3	0.2%	11	0.6%
Transportation Concern	5	0.3%	3	0.2%	1,939	97.2%	20	1.0%
N/A	1,960	98.2%	1,963	98.4%	32	1.6%	1,942	97.3%
No Response	12	0.6%	12	0.6%	15	0.8%	13	0.7%
<b>Total</b>	<b>1,995</b>	<b>100.0%</b>	<b>1,995</b>	<b>100.0%</b>	<b>1,995</b>	<b>100.0%</b>	<b>1,995</b>	<b>100.0%</b>

Middle School Options Primary Concern								
Primary Concern	MS Option 1		MS Modified Option 2		MS Modified Option 3		MS Option 4	
	n	%	n	%	n	%	n	%
Enrollment Concern	7	0.4%	7	0.4%	1	0.1%	6	0.3%
Feeder Pattern Concern	2	0.1%	1	0.1%	4	0.2%	4	0.2%
Neighborhood Concern	6	0.3%	7	0.4%	2	0.1%	7	0.4%
Transportation Concern	4	0.2%	11	0.6%	1,918	96.1%	9	0.5%
N/A	1,946	97.5%	1,940	97.2%	44	2.2%	1,946	97.5%
No Response	30	1.5%	29	1.5%	26	1.3%	23	1.2%
<b>Total</b>	<b>1,995</b>	<b>100.0%</b>	<b>1,995</b>	<b>100.0%</b>	<b>1,995</b>	<b>100.0%</b>	<b>1,995</b>	<b>100.0%</b>



**Options Attitude Summary by Respondents Live-In Elementary School Zone**

The tables below show the options attitude summaries broken down by the live-in zones of the survey respondents:

ES Option 1 Attitude Summary by Respondent Live-In Elementary School Zone									
Live-In ES Zone	Approve	Like	Neutral	Dislike	Oppose	No Response	Total	Percent Approve	Percent Oppose
Belville ES	1,958	3	1	5	17	4	1,988	98.5%	0.9%
Lincoln ES	0	0	0	0	0	0	0	0.0%	0.0%
Town Creek ES	2	0	0	1	0	0	3	66.7%	0.0%
Other	0	0	1	0	0	0	1	0.0%	0.0%
No Response	2	0	0	0	0	1	3	66.7%	0.0%
<b>Total</b>	<b>1,962</b>	<b>3</b>	<b>2</b>	<b>6</b>	<b>17</b>	<b>5</b>	<b>1,995</b>	<b>98.3%</b>	<b>0.9%</b>

ES Modified Option 2 Attitude Summary by Respondent Live-In Elementary School Zone									
Live-In ES Zone	Approve	Like	Neutral	Dislike	Oppose	No Response	Total	Percent Approve	Percent Oppose
Belville ES	1,959	2	2	5	17	3	1,988	98.5%	0.9%
Lincoln ES	0	0	0	0	0	0	0	0.0%	0.0%
Town Creek ES	1	0	1	1	0	0	3	33.3%	0.0%
Other	0	0	1	0	0	0	1	0.0%	0.0%
No Response	2	0	0	0	0	1	3	66.7%	0.0%
<b>Total</b>	<b>1,962</b>	<b>2</b>	<b>4</b>	<b>6</b>	<b>17</b>	<b>4</b>	<b>1,995</b>	<b>98.3%</b>	<b>0.9%</b>

ES Modified Option 3 Attitude Summary by Respondent Live-In Elementary School Zone									
Live-In ES Zone	Approve	Like	Neutral	Dislike	Oppose	No Response	Total	Percent Approve	Percent Oppose
Belville ES	27	2	1	6	1,949	3	1,988	1.4%	98.0%
Lincoln ES	0	0	0	0	0	0	0	0.0%	0.0%
Town Creek ES	0	0	2	1	0	0	3	0.0%	0.0%
Other	0	0	1	0	0	0	1	0.0%	0.0%
No Response	0	0	0	1	1	1	3	0.0%	33.3%
<b>Total</b>	<b>27</b>	<b>2</b>	<b>4</b>	<b>8</b>	<b>1,950</b>	<b>4</b>	<b>1,995</b>	<b>1.4%</b>	<b>97.7%</b>

ES Option 4 Attitude Summary by Respondent Live-In Elementary School Zone									
Live-In ES Zone	Approve	Like	Neutral	Dislike	Oppose	No Response	Total	Percent Approve	Percent Oppose
Belville ES	1,940	2	0	5	38	3	1,988	97.6%	1.9%
Lincoln ES	0	0	0	0	0	0	0	0.0%	0.0%
Town Creek ES	0	1	1	1	0	0	3	0.0%	0.0%
Other	0	0	1	0	0	0	1	0.0%	0.0%
No Response	2	0	0	0	1	0	3	66.7%	33.3%
<b>Total</b>	<b>1,942</b>	<b>3</b>	<b>2</b>	<b>6</b>	<b>39</b>	<b>3</b>	<b>1,995</b>	<b>97.3%</b>	<b>2.0%</b>



MS Option 1 Attitude Summary by Respondent Live-In Elementary School Zone									
Live-In ES Zone	Approve	Like	Neutral	Dislike	Oppose	No Response	Total	Percent Approve	Percent Oppose
Belville ES	1,935	2	3	4	20	24	1,988	97.3%	1.0%
Lincoln ES	0	0	0	0	0	0	0	0.0%	0.0%
Town Creek ES	2	0	0	1	0	0	3	66.7%	0.0%
Other	0	0	1	0	0	0	1	0.0%	0.0%
No Response	2	0	0	0	0	1	3	66.7%	0.0%
<b>Total</b>	<b>1,939</b>	<b>2</b>	<b>4</b>	<b>5</b>	<b>20</b>	<b>25</b>	<b>1,995</b>	<b>97.2%</b>	<b>1.0%</b>

MS Modified Option 2 Attitude Summary by Respondent Live-In Elementary School Zone									
Live-In ES Zone	Approve	Like	Neutral	Dislike	Oppose	No Response	Total	Percent Approve	Percent Oppose
Belville ES	1,943	1	3	4	19	18	1,988	97.7%	1.0%
Lincoln ES	0	0	0	0	0	0	0	0.0%	0.0%
Town Creek ES	1	0	1	1	0	0	3	33.3%	0.0%
Other	0	0	1	0	0	0	1	0.0%	0.0%
No Response	2	0	0	0	0	1	3	66.7%	0.0%
<b>Total</b>	<b>1,946</b>	<b>1</b>	<b>5</b>	<b>5</b>	<b>19</b>	<b>19</b>	<b>1,995</b>	<b>97.5%</b>	<b>1.0%</b>

MS Modified Option 3 Attitude Summary by Respondent Live-In Elementary School Zone									
Live-In ES Zone	Approve	Like	Neutral	Dislike	Oppose	No Response	Total	Percent Approve	Percent Oppose
Belville ES	29	1	3	5	1,932	18	1,988	1.5%	97.2%
Lincoln ES	0	0	0	0	0	0	0	0.0%	0.0%
Town Creek ES	0	1	1	1	0	0	3	0.0%	0.0%
Other	0	0	1	0	0	0	1	0.0%	0.0%
No Response	0	0	0	1	1	1	3	0.0%	33.3%
<b>Total</b>	<b>29</b>	<b>2</b>	<b>5</b>	<b>7</b>	<b>1,933</b>	<b>19</b>	<b>1,995</b>	<b>1.5%</b>	<b>96.9%</b>

MS Option 4 Attitude Summary by Respondent Live-In Elementary School Zone									
Live-In ES Zone	Approve	Like	Neutral	Dislike	Oppose	No Response	Total	Percent Approve	Percent Oppose
Belville ES	1,939	1	2	4	26	16	1,988	97.5%	1.3%
Lincoln ES	0	0	0	0	0	0	0	0.0%	0.0%
Town Creek ES	0	1	1	1	0	0	3	0.0%	0.0%
Other	0	0	1	0	0	0	1	0.0%	0.0%
No Response	0	0	0	1	0	2	3	0.0%	0.0%
<b>Total</b>	<b>1,939</b>	<b>2</b>	<b>4</b>	<b>6</b>	<b>26</b>	<b>18</b>	<b>1,995</b>	<b>97.2%</b>	<b>1.3%</b>

**Conclusion**

To summarize, the data presented in this summary report will be utilized as a tool to help school administrators assess the options. However, the results of the public information session should not be the only deciding factor when reviewing the options due to the uneven distribution of respondents across the district.