



"THE TIGERS SAIL INTO A NEW SCHOOL YEAR!"

WELCOME TO LELAND MIDDLE SCHOOL
2021-2022
OPEN HOUSE & TITLE 1 PARENT NIGHT
AUGUST 18, 2021
4PM-7PM



Principal Kimberly S. McDuffie, Ed.D
Assistant Principal Tom Quinlan
Assistant Principal Mallory Agee
Interim Assistant Principal Ronnie Jenkins



LELAND MIDDLE SCHOOL

"HOME OF THE TIGERS"

Beliefs : We believe that all students can learn.

We believe that all students can and will make progress on the state assessments.

*

- **Mission Statement** To prepare students for high school who are well-grounded in American democratic principles and prepared to meet the challenges presented by an increasingly global society.
- **Vision Statement** To be a learning community striving for continual improvement and career and college readiness for our students.

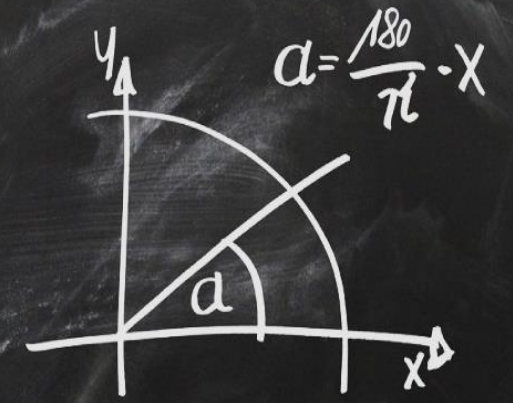


SCHOOL NEWS!

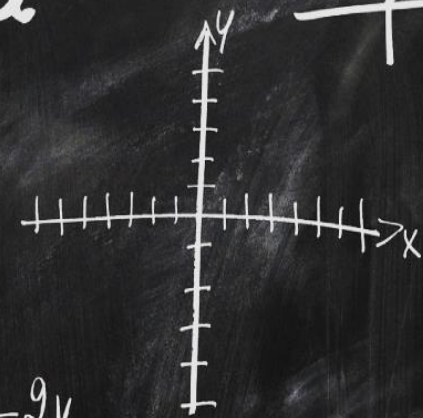
What's New?

- New Assistant Principal
- Interim Assistant Principal
- 6th & 7th Grade 3 Block Schedule
- Intervention/Enrichment Core 1B
- Grading Core 1B

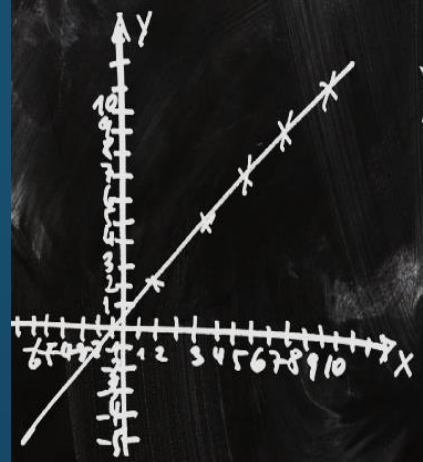
$$X_{1/2} = \frac{-b \pm \sqrt{b^2 - 4ac}}{2a}$$



$$X^2 + pX + q = 0$$



$$X_{1/2} = -\frac{p}{2} \pm \sqrt{\left(\frac{p}{2}\right)^2 - q}$$



$$X = 6 - 2y$$

$$X + a = b$$

$$f(x) = \tan x$$

$$f(x) = \sin x$$



Climate-An Exemplary School:

- **A.** Provides a place where students feel comfortable, safe, and accepted.
- **B.** Promotes open communication between parents, teachers, and students which encourages a sense of teamwork and cooperation.
- **C.** Acknowledges and celebrates the achievements of students and staff in learning and leadership.
- **D.** Develops the concept of community through academic and extracurricular activities with a focus on character development.

II. STAFF-AN EXEMPLARY STAFF:

- **A.** Focuses on increased student achievement with instructional methods that
 - reflect current research and proven effective classroom practices
- **B.** Supports the school's mission, vision, values, and goals in attitude and action
- **C.** Models the importance of lifelong learning through a commitment to ongoing
 - professional development
- **D.** Works to encourage conditions that promote student success
- **E.** Encourages colleagues and students in an atmosphere of support and trust
- **F.** Models professionalism through personal integrity, commitment, and ethical
 - behavior
- **G.** Collaborates to improve student learning (instructional methods and
 - assessments)

III. ACADEMIC EXCELLENCE- IN AN EXEMPLARY SCHOOL

- **A.** The curriculum promotes intellectual curiosity, creative thinking, and challenges students to reach their full potential.
- **B.** High levels of achievement are accomplished through measurable academic standards aligned with major instructional goals.
- **C.** Focus is placed on character development which incorporates respect, social skills, and moral integrity into academic concepts.
- **D.** The concept of teamwork through academic and extracurricular activities is developed.

IV. STUDENTS-IN AN EXEMPLARY SCHOOL

- **A.** Accept responsibility for their learning and their actions
- **B.** Set challenging goals and give their best effort to achieve high academic standards
- **C.** Behave toward other students and teachers in a manner consistent with good character (considerate, responsible, and committed)
- **D.** Encourage each other in an atmosphere of support
- **E.** Become involved in school and community service
-

V. PARENTS AND COMMUNITY SUPPORT- IN AN EXEMPLARY SCHOOL THE PARENTS AND OR COMMUNITY:

- **A.** Play an active role in academic education and character development of the students
- **B.** Form partnerships with teachers to demonstrate the importance of education
- **C.** Monitor their student's academic progress
- **D.** Are involved with the school by volunteering their time and/or service
- **E.** Are supportive of the school's mission, vision, and goals

VALUES STATEMENT

- The Leland Middle School community understands that staff behaviors are the cornerstone to advancing our school's **mission**, **vision**, and **values** statement. Leland School staff collectively and individually commit to the following practices:
- 1. We will provide an inviting classroom environment with clear expectations and specific academic and behavioral goals.
 2. We will promote positive behaviors and attitudes by modeling the qualities of good character (respect, support, and personal integrity) both with colleagues and students.
 3. We will collaborate with students throughout the learning process to achieve academic success and celebrate accomplishments.
-

VALUES STATEMENT CONTINUED

- 4. We will collaborate with colleagues to apply proven, effective classroom learning strategies, and management practices to enhance student learning.
-
- 5. We will demonstrate excellence through character education by providing a variety of opportunities and encouraging participation by all.
-
- 6. We will be committed to keeping parents informed about their student's progress and seek opportunities to invite their active support of Leland Middle School and its students.
-
- 7. We will be dedicated to developing and improving teaching strategies through professional development.
-
-

ENRICHMENT AND INTERVENTIONS

- Lexia Learning
- Google Classroom
- Enrichment Core 1B
- Reading Interventions
- MATH I
- Math 180
- Math/ELA/Science XL
- • *Encourage students to read* • *Talk with team about Tutoring* • *Lexia Learning* • *Parent Portal*

HELPFUL RESOURCES

- NCWISEOWL www.ncwiseowl.org
- SORA <https://soraapp.com/welcome>
- Lexia Learning-via clever
- <https://www.lexiapowerup.com/>
- Parent Resources PowerPoint
- CNN10
- Parent Toolkit

PRIORITY GOALS

- At Leland School, the faculty and staff are focusing on four priority goals.
- ●To increase student proficiency on math EOGs.
- To increase student proficiency on reading EOGs.
- To increase parental involvement and community perception of our school.
- To increase collaboration between parents, teachers, students, and community.

COMMUNITIES IN SCHOOLS

Mrs. Ruth Thompson
rthompson@bcswan.net

- Lunch Buddies
- Tutoring
- Peer Court



Intervention/Enrichment (W.I.N) Example Schedule



6th Grade WIN Team & Schedule (45 M)					
Room	WIN Team 1				
Room #	Teacher	Monday Core 1	Tuesday Core 2	Wednesday Core 3	Thursday Week 1 Core 1 Thursday Week 2 Core 2 Thursday Week 3 Core 3
803	Crocker	Math 180/Math Enrichment	Math 180/Math Enrichment	Math 180/Math Enrichment	Math 180/Math Enrichment
801	Pender	AIG Portfolio/Reading Enrichment	Math XL/Small Group Enrichment	Math XL/Small Group Enrichment	Math XL/Small Group Enrichment
802	Deviney	Math XL (30)/Lexia (15) or Reading	Math XL (30)/Lexia (15) or Reading	Math XL (30)/Lexia (15) or Reading	Math XL (30)/Lexia (15) or Reading

TITLE 1 BUDGET 2021-2022

Allocation \$ 156,306.00

Parent involvement Allocation \$ 3,393.80

Total Allocation \$ 159,699.80 Received

\$122,790.25 Teaching Positions

\$38,872.06 Tutors

\$2519.26 Supplies

\$3,393.80 Parent Involvement

\$ 1,076.50 Substitute



